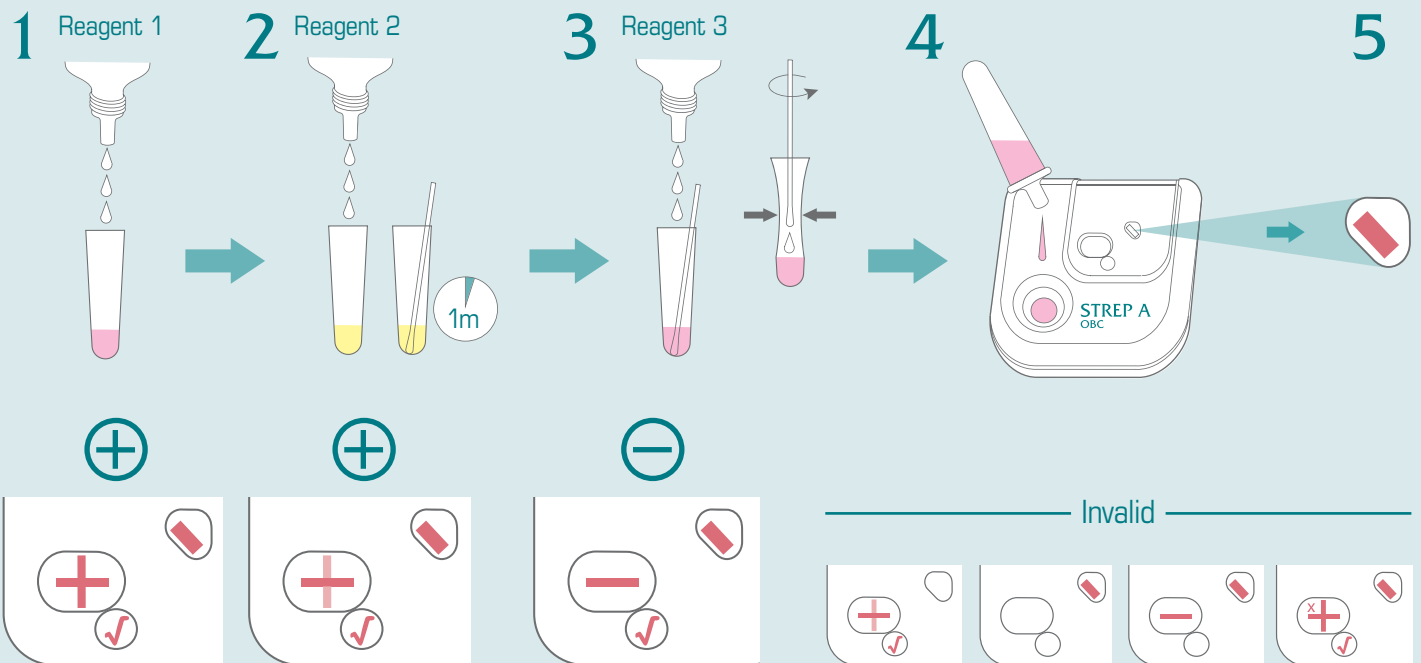


STREP A

In-built positive and negative controls

Inverness Medical
TESTPACK™+Plus



- 1 Add 3 drops of Reagent 1 (pink) to an extraction tube.
- 2 Add 3 drops of Reagent 2. Solution must turn yellow. Place swab in tube, twirl and mix well. Let stand for between 1-30 minutes.
- 3 Add 3 drops of Reagent 3. Twirl swab and mix well. Solution must turn pink.

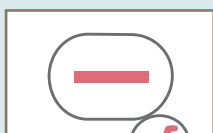
Express the liquid from swab - squeeze and rotate as it is withdrawn. Apply dropper tip to extraction tube.

Immediately before use, remove test from foil pouch.

- 4 Add entire contents of extraction tube drop-wise to sample well.
- 5 When End of Assay window changes to pink/red read result. Do not interpret results after 10 minutes.

Assay Check

MUST BE present for valid test results



The Minus Sign
A control showing that the sample has run through the test correctly.



The Positive Control
Indicates the antibodies that detect Group A Streptococcal antigen are working.



End of Assay
Indicates the test is ready to read.

MUST NOT be present



The Negative Control
Indicates a non-specific entity in the sample that could cause a false positive result.

For a Positive Result



The Patient Bar
Indicates the presence of Group A Streptococcal antigen in the sample.